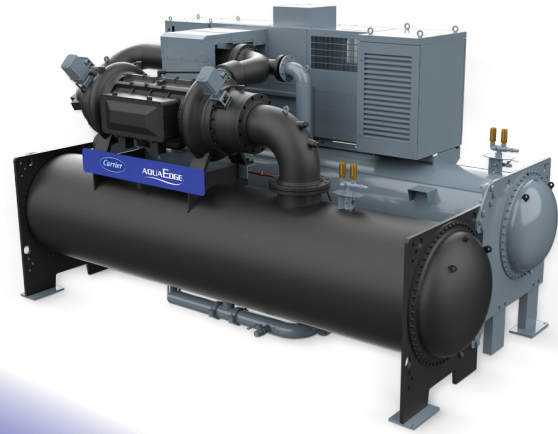




QuantumLeap™
DATA CENTRE SOLUTIONS

AquaEdge® 19MV4

A Carrier QuantumLeap™
Data Centre Solution



Variable-Speed Centrifugal Chiller

A leap forward in energy-efficient cooling performance

Capacity Range:	Nominal cooling capacity:
600 - 950 tons	2100 - 3325 kW

As you look to meet growing demands for performance, sustainability and resilience, Carrier is expanding its QuantumLeap™ Data Centre Solutions to help you get there. Achieve reliable cooling when your data centre needs it most. Delivering 2.1–3.3 MW capacity, AquaEdge® 19MV4 performs even at 55°C condensing temperature and with chilled water up to 35°C.



Carrier QuantumLeap Data Centre Solutions bring you a comprehensive suite of innovations designed to help meet your operational goals and business objectives. [Learn more at https://quantumleap.carrier.uk/](https://quantumleap.carrier.uk/)

Benefits at a glance



Advanced Cooling Performance for the AI Era

- Delivers the cooling capacity you need — **2.1 to 3.3 MW***
- Operates under high-ambient conditions with condensing temperatures **up to 55°C**.
- Ensures high performance even with **chilled-water temperatures up to 35°C**, ideal for high-density AI environments.
- Keeps noise levels below **80 dBA**** for a more comfortable workspace.
- Modulates smoothly from 10% to 100% load, thanks to **Carrier EquiDrive™** two-stage centrifugal compressor.



Reduces Your Energy Bills While Protecting Your IT

- Supports the reduction of energy use and operating costs.
- Achieves a **COP of 6.75****, delivering over 30% savings versus standard systems***.
- Offers a high **IPLV of 11.4**** for strong part-load efficiency.



Continuous cooling for your performance

- **Restarts within 150 seconds**, ensuring fast & progressive recovery after power outages.
- Delivers stable performance even at 10% load for unlimited time.
- Keeps **THDi below 5%** thanks to Active Harmonic Filters, protecting electrical infrastructure and reducing maintenance risks.



Supports Your Sustainability Strategy

- Provides **low-GWP refrigerant** choices such as R-1234ze or R-515B.
- High efficiency helps lower overall power use and supports your **carbon-neutrality** initiatives.

* at 20/30 °C chilled water and 49/55 °C condensation loop.

** AHRI conditions.

*** Energy-savings comparison based on Carrier-defined baseline unit under AHRI conditions.

AquaEdge® 19MV4

Enjoy quieter operation, lower energy bills, fast recovery after power outages and long-term sustainability thanks to high efficiency and low-GWP refrigerants.



Service & Support



Specialised Expertise

Dedicated experts to optimize performance



24/7 Reliability

Proactive monitoring and rapid response



Leading-Edge Security

Secure connectivity and compliance with stringent protocols



Trusted Partnership

Elevated service and flexible solutions

Integrated Management Solutions



DCIM

Intelligent Management Solutions

- Manage
- Monitor
- Scale



SUPERVISION

Global Supervision for your facility Subsystems

- Control
- Visualise
- Optimise



AUTOMATION

Smart Sequencing for your Plant room equipment

- Automate
- Integrate
- Coordinate

Carrier QuantumLeap™ Data Centre Solutions

The AquaEdge® 19MV4 is part of Carrier QuantumLeap, a comprehensive suite of innovations designed to help maximising performance and energy efficiency in your data centre.

Data Driven
Decisions

Integrated
Management
Solutions

Thermal
Solutions

Carrier

Service
& Support

Efficient Cooling
Uninterrupted
Data

Unstoppable Performance
for your Operation

For more information about the AquaEdge® 19MV4 and QuantumLeap Data Centre Solutions, and to connect with a Carrier data centre expert, visit <https://quantumleap.carrier.uk/>